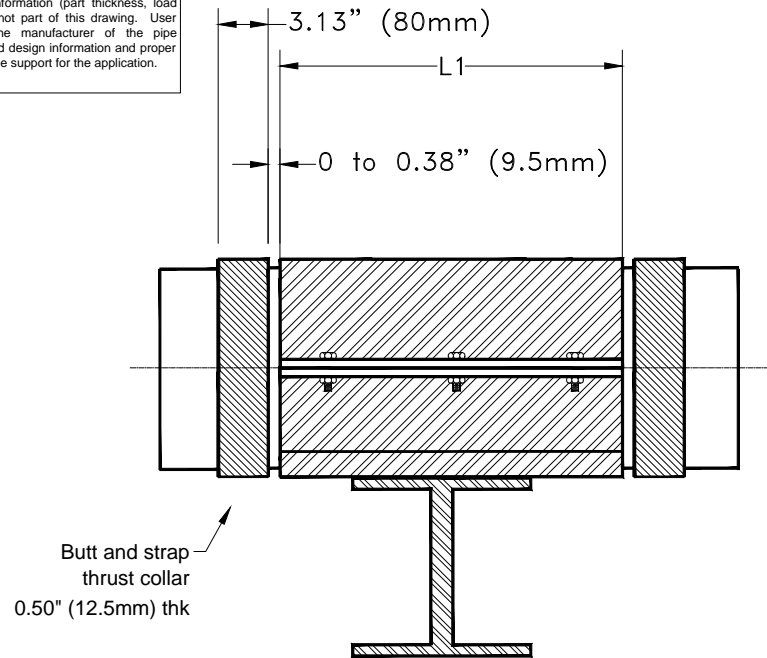
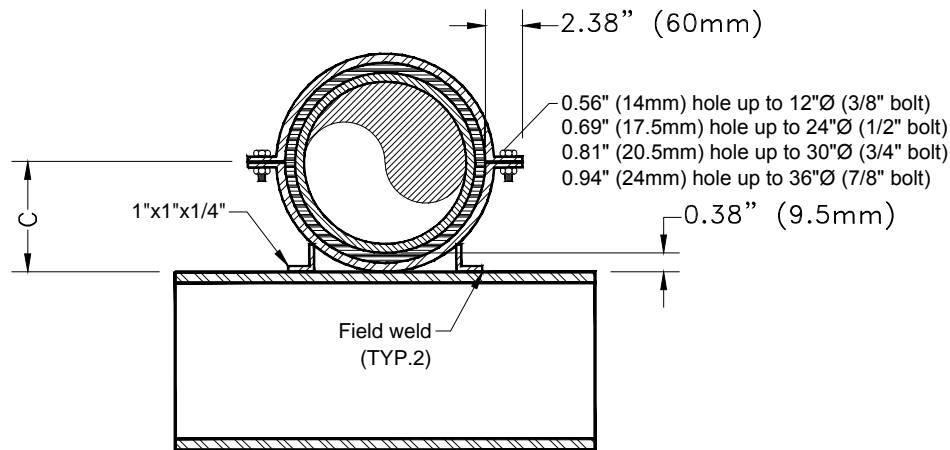


Information in this drawing is of a general nature. Detailed design information (part thickness, load ratings, etc.) are not part of this drawing. User should consult the manufacturer of the pipe support for detailed design information and proper selection of the pipe support for the application.



SIDE



ELEV

- NOTE 5. Average O.D. is typically 0.03" to 0.10" larger than the nominal O.D.
 NOTE 4. $C = 0.5 * \text{Nominal O.D.} + 0.38\text{in.}$
 NOTE 3. Steel saddle includes 1/8in. thick neoprene liner.
 NOTE 2. 0.38in. (9.5mm) dimension is from T.O.S. to B.O.P.
 NOTE 1. Thrust collar may need to be larger depending upon design conditions.

Nominal Pipe Size	Nominal O.D.	L1	C
2" (DN50)		6" 152mm	
3" (DN80)		6" 152mm	
4" (DN100)		6" 152mm	
6" (DN150)		8" 203mm	
8" (DN200)		10" 254mm	
10" (DN250)		12" 305mm	
12" (DN300)		12" 305mm	
14" (DN350)		12" 305mm	
16" (DN400)		12" 305mm	
18" (DN450)		16" 406mm	
20" (DN500)		16" 406mm	
24" (DN600)		16" 406mm	
30" (DN750)		20" 508mm	
36" (DN900)		20" 508mm	
42" (DN1050)			
48" (DN1200)			
54" (DN1350)			
60" (DN1500)			

FIBERBOND®
 ENGINEERED COMPOSITE PIPING SYSTEMS
 Manufactured by Future Pipe Industries
 www.fiberbond.com Baton Rouge, LA, U.S.A.

This print and its contents are the property of Future Pipe Industries. Use of print or its contents is prohibited unless authorized in writing. This information is subject to the controls of the Export Administration Regulations (EAR). Diversion contrary to US Law is strictly prohibited.

SMALL STEEL ANCHOR
 FIG.232 - GENERAL DETAIL

REV: 3