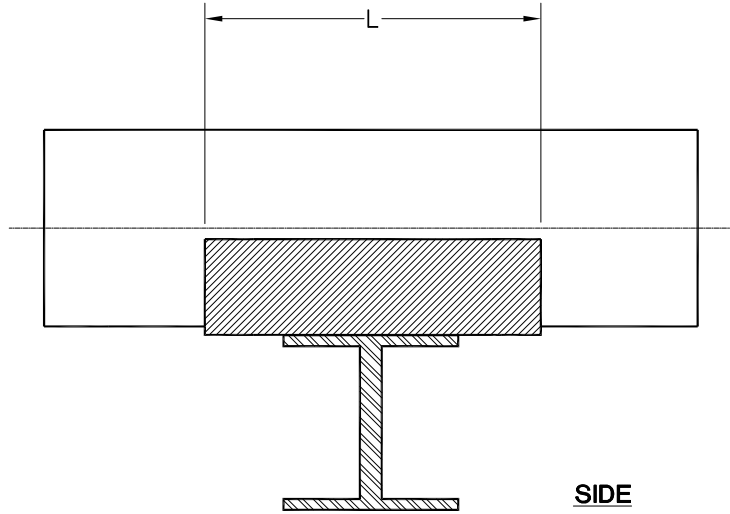
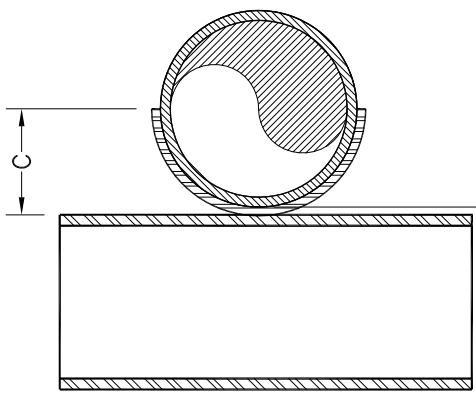


DO NOT DUPLICATE
 This print and its contents are the property of ITT Corporation. Use of print or its contents is prohibited unless authorized in writing.



SIDE



ELEV

0.12" to 0.20" (3 to 5mm) up to 12"∅
 0.20 to 0.32" (5 to 8mm) 14" to 24"∅
 0.32 to 0.42" (8 to 10.5mm) 26" to 60"∅

Nominal Pipe Size	Nominal O.D.	C	L	Minimum L
2"				
3"				
4"				
6"				
8"				
10"				
12"				
14"				
16"				
18"				
20"				
24"				
30"				
36"				
42"				
48"				
54"				
60"				

FIBERBOND®

FIBERGLASS AND ADVANCED COMPOSITE PIPING SYSTEMS
 Manufactured by Specialty Plastics
 Baton Rouge, LA, U.S.A.

www.fiberbond.com

SCALE:	NONE	BATCH	
DRAWN:	KGS	D061095	
CH'KD:	KGS	C061195	
		DRAWING:	FIGURE 210
		FILENAME:	FIG210

SUPPORT TYPE:	FRP WEAR PAD
SUPPORT GROUP:	ONEWAY SUPPORT
FIGURE NUMBER:	FIGURE 210

REV
5

- NOTE 5. $C = 0.5 * \text{Nominal O.D.} + T1$.
 NOTE 4. T1 dimension is from T.O.S. to B.O.P.
 NOTE 3. Wear pad to be centered on structural support.
 NOTE 2. Wear pad to have minimum 120 degrees of contact (max. 180 degrees).
 NOTE 1. Saddle to be of the same material as the pipe.