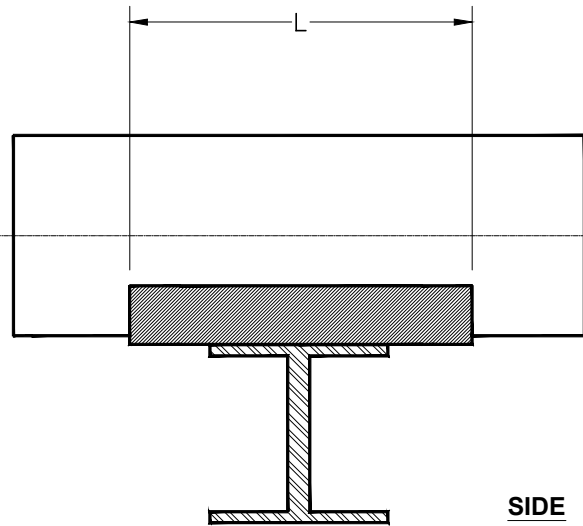
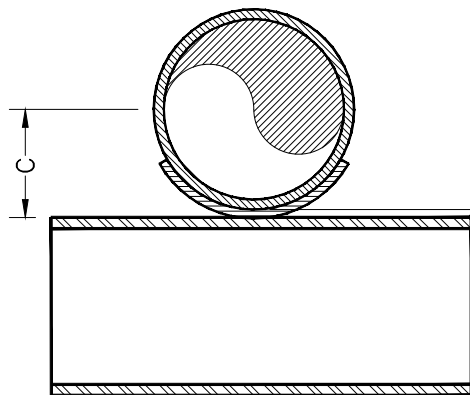


Information in this drawing is of a general nature. Detailed design information (part thickness, load ratings, etc.) are not part of this drawing. User should consult the manufacturer of the pipe support for detailed design information and proper selection of the pipe support for the application.



**SIDE**



**ELEV**

0.20 to 0.32" (5 to 8mm) up to 24"Ø  
 0.32 to 0.42" (8 to 10.5mm) 26" to 60"Ø

Nominal Pipe Size	Nominal O.D.		C		L		Minimum L		Weight (lb/kg)	
<b>SERIES 20JF, 20JF-C</b>										
1" (DN25)	2.13"	54mm	1.31"	33mm	6"	152mm	4"	102mm	0.4	0.2
1.5" (DN40)	2.63"	66mm	1.56"	40mm	6"	152mm	4"	102mm	0.5	0.2
2" (DN50)	3.13"	79mm	1.81"	46mm	6"	152mm	4"	102mm	0.7	0.3
3" (DN80)	4.13"	105mm	2.31"	59mm	6"	152mm	4"	102mm	1.0	0.5
4" (DN100)	5.13"	130mm	2.81"	71mm	6"	152mm	4"	102mm	1.3	0.6
6" (DN150)	7.13"	181mm	3.81"	97mm	8"	203mm	4"	102mm	2.6	1.2
8" (DN200)	9.13"	232mm	4.81"	122mm	10"	254mm	4"	102mm	4.2	1.9
10" (DN250)	11.25"	286mm	5.88"	149mm	12"	305mm	4"	102mm	6.3	2.9
12" (DN300)	13.38"	340mm	6.94"	176mm	12"	305mm	4"	102mm	7.5	3.4
14" (DN350)	15.88"	403mm	8.19"	208mm	12"	305mm	4"	102mm	8.9	4.0
16" (DN400)	18.00"	457mm	9.25"	235mm	12"	305mm	4"	102mm	10.1	4.6
18" (DN450)										
20" (DN500)										
24" (DN600)										
30" (DN750)										
36" (DN900)										
42" (DN1050)										
48" (DN1200)										
54" (DN1350)										
60" (DN1500)										

- NOTE 4.  $C = 0.5 * \text{Nominal O.D.} + \text{Pad Thk}$  (0.25" nom. up to 24"Ø, 0.38" above 24"Ø).
- NOTE 3. Wear pad to be centered on structural support.
- NOTE 2. Wear pad to have minimum 120 degrees of contact (max. 180 degrees).
- NOTE 1. Wear pad to be of the same material as the pipe.

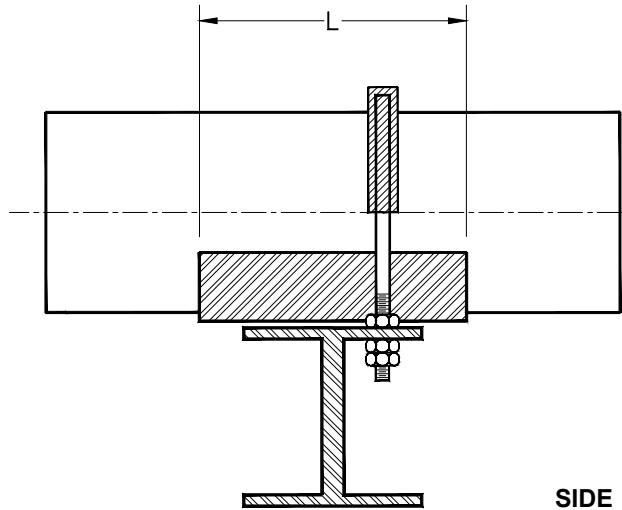
This print and its contents are the property of Future Pipe Industries. Use of print or its contents is prohibited unless authorized in writing. This information is subject to the controls of the Export Administration Regulations (EAR). Diversion contrary to US Law is strictly prohibited.

**FIBERBOND®**  
 ENGINEERED COMPOSITE PIPING SYSTEMS  
 Manufactured by Future Pipe Industries  
[www.fiberbond.com](http://www.fiberbond.com)  
 Baton Rouge, LA, U.S.A.

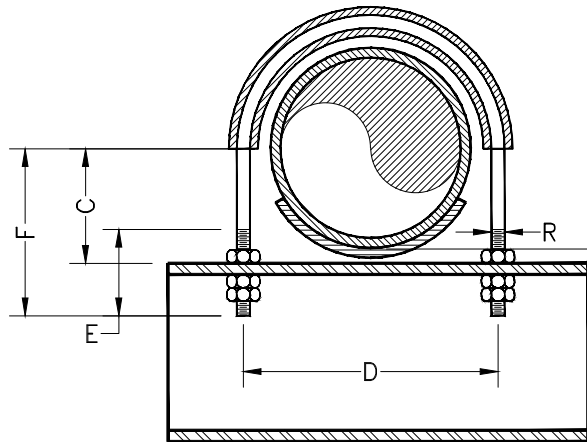
FRP "WEAR" PAD  
 FIG.210 - 20JF

REV: 7

Information in this drawing is of a general nature. Detailed design information (part thickness, load ratings, etc.) are not part of this drawing. User should consult the manufacturer of the pipe support for detailed design information and proper selection of the pipe support for the application.



**SIDE**



**ELEV**

0.20 to 0.32" (5 to 8mm) up to 24"Ø  
0.32 to 0.42" (8 to 10.5mm) 26" to 60"Ø

Nominal Pipe Size	L		R	D +/- 0.12"		E		F	
<b>SERIES 20HV, 20FR-E, 20FR16, 20FR20, 20JF, 20JF16, 110FW, 20C, 20HV-D</b>									
<b>SERIES 20HV-C, 20FR-EC, 20FR16-C, 20FR20-C, 20JF-C, 20JF16-C, 20HV(FDA)</b>									
1" (DN25)	6"	152mm	3/8"	3.25"	83mm	3.00"	76mm	2.75"	70mm
1.5" (DN40)	6"	152mm	3/8"	3.75"	95mm	3.00"	76mm	3.00"	76mm
2" (DN50)	6"	152mm	3/8"	4.25"	108mm	3.00"	76mm	3.25"	83mm
3" (DN80)	6"	152mm	1/2"	5.25"	133mm	3.50"	89mm	4.13"	105mm
4" (DN100)	6"	152mm	1/2"	6.25"	159mm	3.50"	89mm	4.63"	118mm
6" (DN150)	8"	203mm	5/8"	8.38"	213mm	4.00"	102mm	6.06"	154mm
8" (DN200)	10"	254mm	5/8"	10.38"	264mm	4.00"	102mm	7.13"	181mm
10" (DN250)	12"	305mm	3/4"	12.50"	317mm	4.50"	114mm	8.56"	217mm
12" (DN300)	12"	305mm	7/8"	14.75"	375mm	5.00"	127mm	10.00"	254mm
14" (DN350)	12"	305mm	7/8"	16.95"	430mm	5.00"	127mm	11.23"	285mm
16" (DN400)	12"	305mm	7/8"	19.11"	485mm	5.00"	127mm	12.31"	313mm
18" (DN450)	16"	356mm	1"	21.42"	544mm	5.50"	140mm	13.77"	350mm
20" (DN500)	16"	356mm	1"	23.38"	594mm	5.50"	140mm	14.75"	375mm
24" (DN600)	16"	356mm	1"	27.68"	703mm	5.50"	140mm	16.90"	429mm
30" (DN750)	20"	508mm	1"	33.78"	858mm	5.50"	140mm	19.72"	501mm
36" (DN900)	20"	508mm	1"	40.06"	1018mm	5.50"	140mm	22.86"	581mm
42" (DN1050)									
48" (DN1200)									

- NOTE 11.** An "extra-long" L dimension of 14" (356mm) may be used up to 16"Ø.  
**NOTE 10.** Minimum L dimensions per Fig.210 may also be used.  
**NOTE 9.** F = C + 1/2in. + 3 \* R (or use values in table).  
**NOTE 8.** E = 4 \* R + 1 1/2in.  
**NOTE 7.** C = 0.5 \* Avg O.D. + T1 (See Fig.210 for C dimensions).  
**NOTE 6.** D = Pipe O.D. + 2 \* T1 + R + 1/4in. (or use values in table).  
**NOTE 5.** T1 dimension is from T.O.S. to B.O.P.  
**NOTE 4.** The u-bolt shall not "anchor" the pipe.  
**NOTE 3.** Wear pad to be centered on structural support.  
**NOTE 2.** Wear pad to have minimum 120 degrees of contact (max. 180 degrees).  
**NOTE 1.** Saddle to be of the same material as the pipe.

Rev 12 Changes: Increased "D" dimension in sizes 1" thru 2" by 0.5", in sizes 3" & 4" by 3/8", in size 6" by 1/4" and in size 8" by 1/8". No other changes.

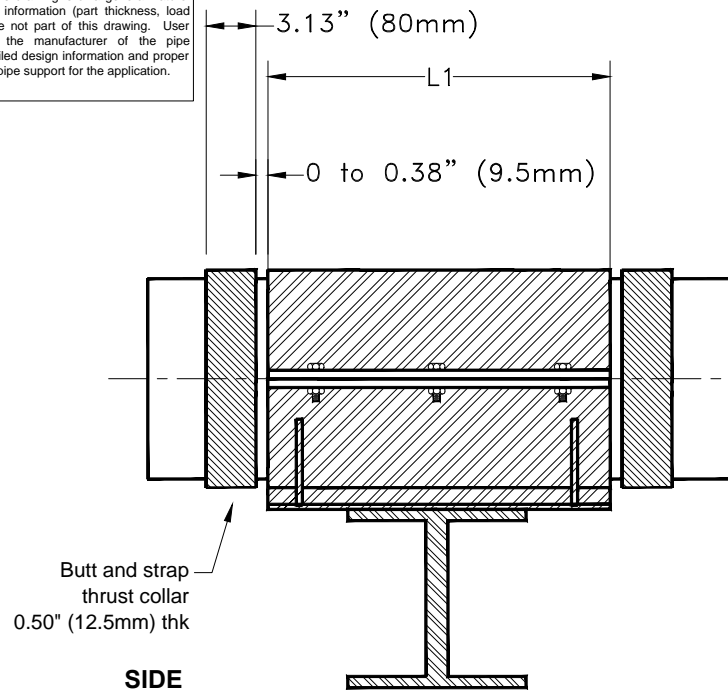
**FIBERBOND®**  
 ENGINEERED COMPOSITE PIPING SYSTEMS  
 Manufactured by Future Pipe Industries  
 www.fiberbond.com      Baton Rouge, LA, U.S.A.

This print and its contents are the property of Future Pipe Industries. Use of print or its contents is prohibited unless authorized in writing. This information is subject to the controls of the Export Administration Regulations (EAR). Diversion contrary to US Law is strictly prohibited.

RUBBER COATED U-BOLT  
 FIG.226 - GENERAL DETAIL

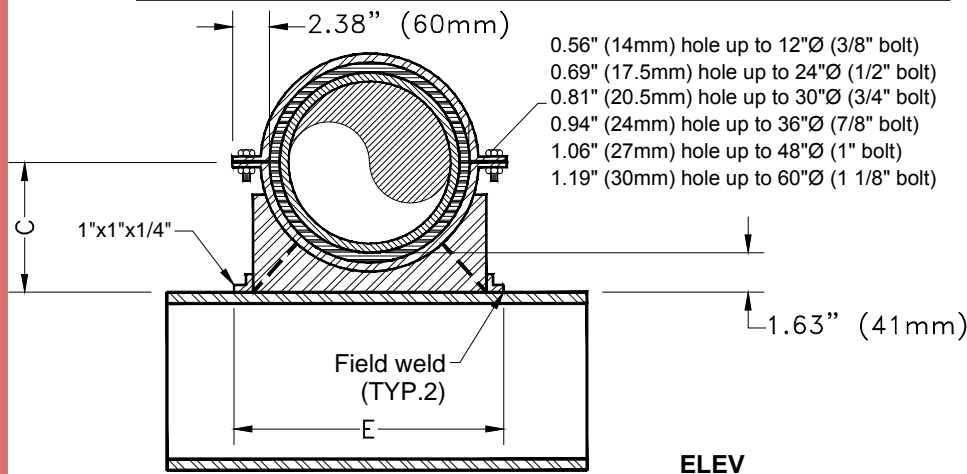
REV: 12

Information in this drawing is of a general nature. Detailed design information (part thickness, load ratings, etc.) are not part of this drawing. User should consult the manufacturer of the pipe support for detailed design information and proper selection of the pipe support for the application.



**SIDE**

Nominal Pipe Size	Nominal O.D.		L1		C		E	
<b>SERIES 20JF, 20JF-C</b>								
6" (DN150)	7.13"	181mm	8"	203mm	5.19"	132mm	12.00"	305mm
8" (DN200)	9.13"	232mm	10"	254mm	6.20"	157mm	14.00"	356mm
10" (DN250)	11.25"	286mm	12"	305mm	7.26"	184mm	16.00"	406mm
12" (DN300)	13.38"	340mm	12"	305mm	8.32"	211mm	18.00"	458mm
14" (DN350)	15.88"	403mm	12"	305mm	9.57"	243mm	20.25"	514mm
16" (DN400)	18.00"	457mm	12"	305mm	10.63"	270mm	22.25"	565mm
18" (DN450)								
20" (DN500)								
24" (DN600)								
30" (DN750)								
36" (DN900)								
42" (DN1050)								
48" (DN1200)								
54" (DN1350)								
60" (DN1500)								



**ELEV**

- NOTE 5. Average O.D. is typically 0.03" to 0.10" larger than the nominal O.D.  
 NOTE 4. C = 0.5 \* Nominal O.D. + 1.63in.  
 NOTE 3. Steel saddle includes 1/8in. thick neoprene liner.  
 NOTE 2. 1.63in. (41mm) dimension is from T.O.S to B.O.P.  
 NOTE 1. Thrust collar may need to be larger depending upon design conditions.

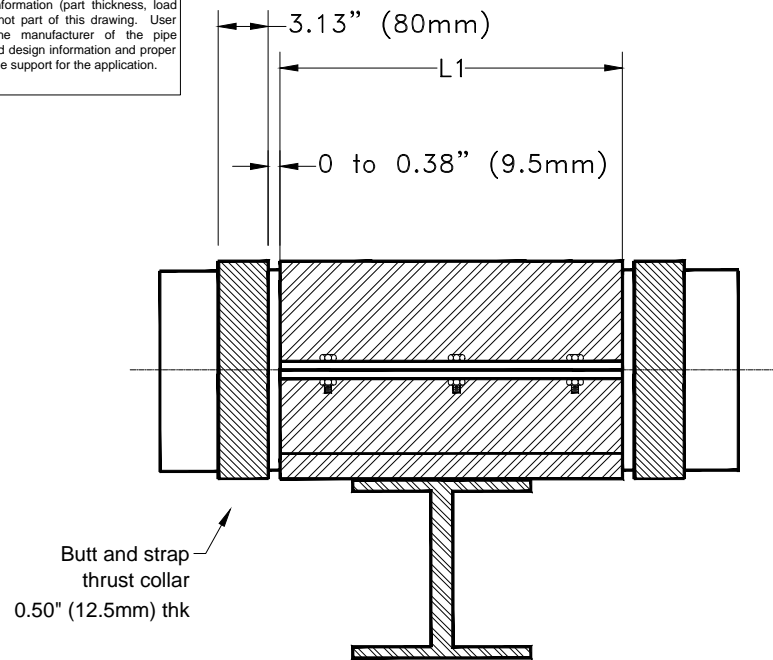
This print and its contents are the property of Future Pipe Industries. Use of print or its contents is prohibited unless authorized in writing. This information is subject to the controls of the Export Administration Regulations (EAR). Diversion contrary to US Law is strictly prohibited.

**FIBERBOND®**  
 ENGINEERED COMPOSITE PIPING SYSTEMS  
 Manufactured by Future Pipe Industries  
[www.fiberbond.com](http://www.fiberbond.com) Baton Rouge, LA, U.S.A.

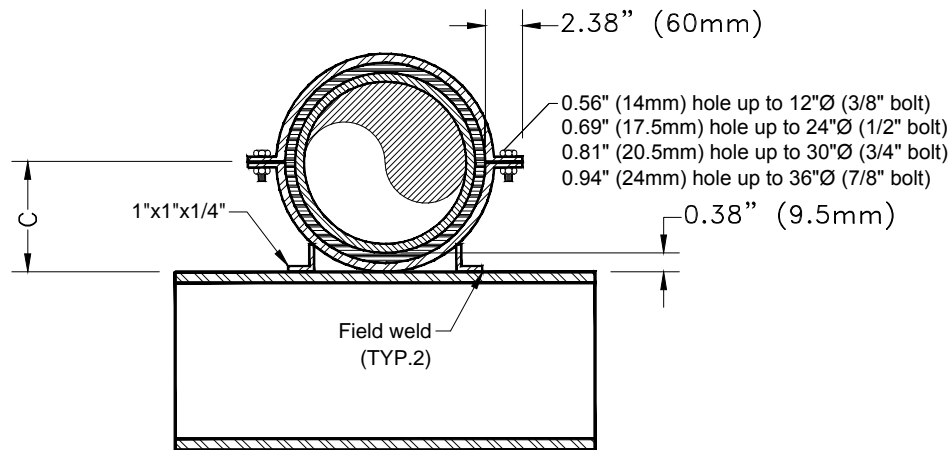
STEEL ANCHOR  
 FIG.230 - 20JF

REV: 4

Information in this drawing is of a general nature. Detailed design information (part thickness, load ratings, etc.) are not part of this drawing. User should consult the manufacturer of the pipe support for detailed design information and proper selection of the pipe support for the application.



**SIDE**



**ELEV**

- NOTE 5. Average O.D. is typically 0.03" to 0.10" larger than the nominal O.D.
- NOTE 4.  $C = 0.5 * \text{Nominal O.D.} + 0.38\text{in.}$
- NOTE 3. Steel saddle includes 1/8in. thick neoprene liner.
- NOTE 2. 0.38in. (9.5mm) dimension is from T.O.S. to B.O.P.
- NOTE 1. Thrust collar may need to be larger depending upon design conditions.

Nominal Pipe Size	Nominal O.D.		L1		C	
<b>SERIES 20JF, 20JF-C</b>						
2" (DN50)	3.13"	79mm	6"	152mm	1.94"	49mm
3" (DN80)	4.13"	105mm	6"	152mm	2.44"	62mm
4" (DN100)	5.13"	130mm	6"	152mm	2.94"	75mm
6" (DN150)	7.13"	181mm	8"	203mm	3.94"	100mm
8" (DN200)	9.13"	232mm	10"	254mm	4.94"	125mm
10" (DN250)	11.25"	286mm	12"	305mm	6.00"	152mm
12" (DN300)	13.38"	340mm	12"	305mm	7.07"	180mm
14" (DN350)	15.88"	403mm	12"	305mm	8.32"	211mm
16" (DN400)	18.00"	457mm	12"	305mm	9.38"	238mm
18" (DN450)						
20" (DN500)						
24" (DN600)						
30" (DN750)						
36" (DN900)						
42" (DN1050)						
48" (DN1200)						
54" (DN1350)						
60" (DN1500)						

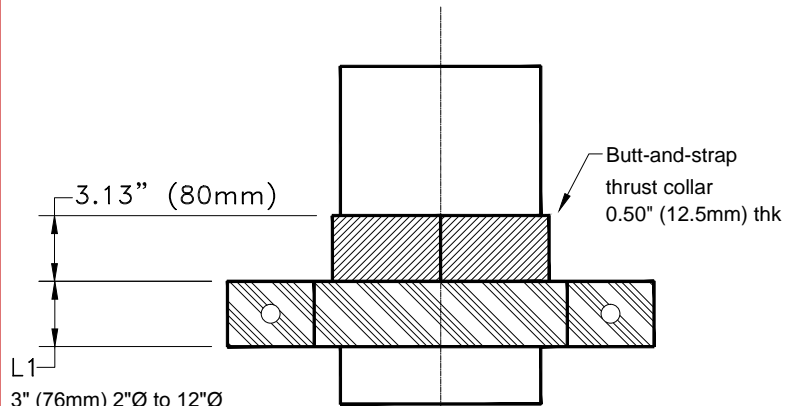
**FIBERBOND®**  
 ENGINEERED COMPOSITE PIPING SYSTEMS  
 Manufactured by Future Pipe Industries  
[www.fiberbond.com](http://www.fiberbond.com)      Baton Rouge, LA, U.S.A.

This print and its contents are the property of Future Pipe Industries. Use of print or its contents is prohibited unless authorized in writing. This information is subject to the controls of the Export Administration Regulations (EAR). Diversion contrary to US Law is strictly prohibited.

SMALL STEEL ANCHOR  
 FIG.232 - 20JF

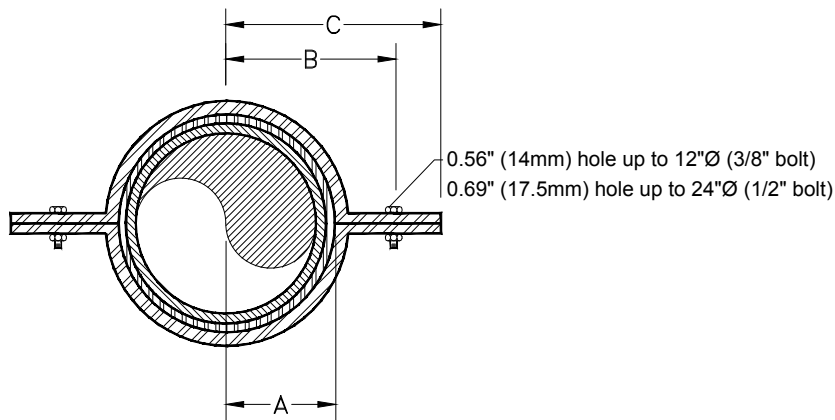
REV: 3

Information in this drawing is of a general nature. Detailed design information (part thickness, load ratings, etc.) are not part of this drawing. User should consult the manufacturer of the pipe support for detailed design information and proper selection of the pipe support for the application.



- 3" (76mm) 2"Ø to 12"Ø
- 5" (127mm) 14"Ø to 16"Ø
- 6" (152mm) 18"Ø to 30"Ø
- 8" (203mm) 36"Ø to 42"Ø
- 9" (229mm) 48"Ø to 60"Ø

**ELEV**



**PLAN**

NOTE 5. 'A' dimension is from pipe centerline to neoprene/steel interface.

NOTE 4.  $A = 0.5 * \text{Nominal O.D.} + 0.13\text{in.}$

NOTE 3.  $B = 0.5 * \text{Nominal O.D.} + 1.75\text{in.}; C = B + 1.25\text{in.}$

NOTE 2. Steel saddle includes 1/8in. thick neoprene liner.

NOTE 1. A separate bonded collar (two halves) may also be used.

Nominal Pipe Size	Nominal O.D.		A		B		C	
<b>SERIES 20JF, 20JF-C</b>								
2" (DN50)	3.13"	79mm	1.69"	43mm	3.31"	84mm	4.56"	116mm
3" (DN80)	4.13"	105mm	2.19"	56mm	3.81"	97mm	5.06"	128mm
4" (DN100)	5.13"	130mm	2.69"	68mm	4.31"	109mm	5.56"	141mm
6" (DN150)	7.13"	181mm	3.69"	94mm	5.31"	135mm	6.56"	167mm
8" (DN200)	9.13"	232mm	4.69"	119mm	6.32"	161mm	7.57"	192mm
10" (DN250)	11.25"	286mm	5.75"	146mm	7.38"	187mm	8.63"	219mm
12" (DN300)	13.38"	340mm	6.82"	173mm	8.44"	214mm	9.69"	246mm
14" (DN350)	15.88"	403mm	8.07"	205mm	9.69"	246mm	10.94"	278mm
16" (DN400)	18.00"	457mm	9.13"	232mm	10.75"	273mm	12.00"	305mm
18" (DN450)								
20" (DN500)								
24" (DN600)								
30" (DN750)								
36" (DN900)								
42" (DN1050)								
48" (DN1200)								
54" (DN1350)								
60" (DN1500)								

**FIBERBOND®**

ENGINEERED COMPOSITE PIPING SYSTEMS

Manufactured by Future Pipe Industries

www.fiberbond.com

Baton Rouge, LA, U.S.A.

This print and its contents are the property of Future Pipe Industries. Use of print or its contents is prohibited unless authorized in writing. This information is subject to the controls of the Export Administration Regulations (EAR). Diversion contrary to US Law is strictly prohibited.

STEEL RISER CLAMP

FIG.240 - 20JF

REV: 3

Information in this drawing is of a general nature. Detailed design information (part thickness, load ratings, etc.) are not part of this drawing. User should consult the manufacturer of the pipe support for detailed design information and proper selection of the pipe support for the application.

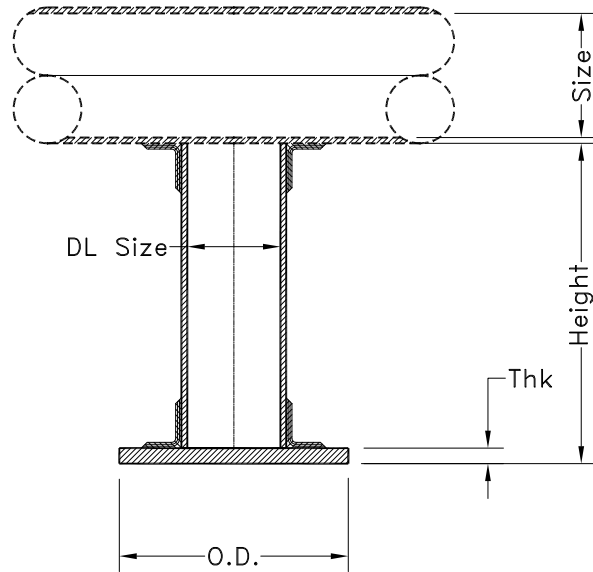


FIG.91 (shop fab'd to a tee or pipe)

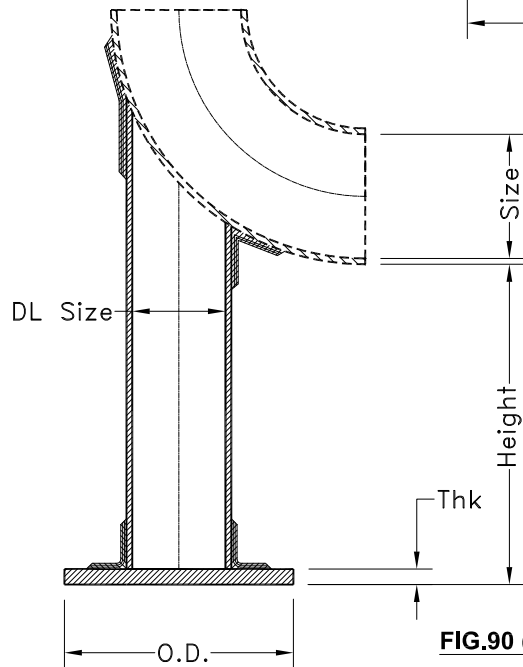


FIG.90 (shop fab'd to an elbow)

Nominal Pipe Size	DL Size	O.D.	Thk
2" (DN50)	2"	5" 127mm	1/2" 12.5mm
3" (DN80)	2"	5" 127mm	1/2" 12.5mm
4" (DN100)	3"	6" 152mm	1/2" 12.5mm
5" (DN125)	3"	6" 152mm	1/2" 12.5mm
6" (DN150)	4"	7" 178mm	1/2" 12.5mm
8" (DN200)	6"	9" 229mm	1/2" 12.5mm
10" (DN250)	6"	9" 229mm	1/2" 12.5mm
12" (DN300)	8"	12" 305mm	1/2" 12.5mm
14" (DN350)	10"	14" 356mm	1/2" 12.5mm
16" (DN400)	12"	16" 406mm	1/2" 12.5mm
18" (DN450)	14"	18" 457mm	1/2" 12.5mm
20" (DN500)	18"	22" 559mm	1/2" 12.5mm
24" (DN600)	18"	22" 559mm	1/2" 12.5mm
30" (DN750)	24"	28" 711mm	3/4" 19mm
36" (DN900)	24"	28" 711mm	3/4" 19mm
42" (DN1050)	36"	40" 1016mm	3/4" 19mm
48" (DN1200)	36"	40" 1016mm	3/4" 19mm
54" (DN1350)	48"	52" 1321mm	3/4" 19mm
60" (DN1500)	48"	52" 1321mm	3/4" 19mm

- NOTE 4. Fig.90 and Fig.91 are identical except Fig.91 is on a tee or pipe.  
 NOTE 3. Maximum recommended length of dummy leg is 3'-0" (914mm).  
 NOTE 2. Plate to be shipped loose and field installed. 6" of trim to be included.  
 NOTE 1. Dummy leg to be of the same material as the pipe.

This print and its contents are the property of Future Pipe Industries. Use of print or its contents is prohibited unless authorized in writing. This information is subject to the controls of the Export Administration Regulations (EAR). Diversion contrary to US Law is strictly prohibited.

**FIBERBOND®**  
 ENGINEERED COMPOSITE PIPING SYSTEMS  
 Manufactured by Future Pipe Industries  
 www.fiberbond.com Baton Rouge, LA, U.S.A.

FRP "DUMMY LEG"  
 FIG.90 - GENERAL DETAIL

REV: 2